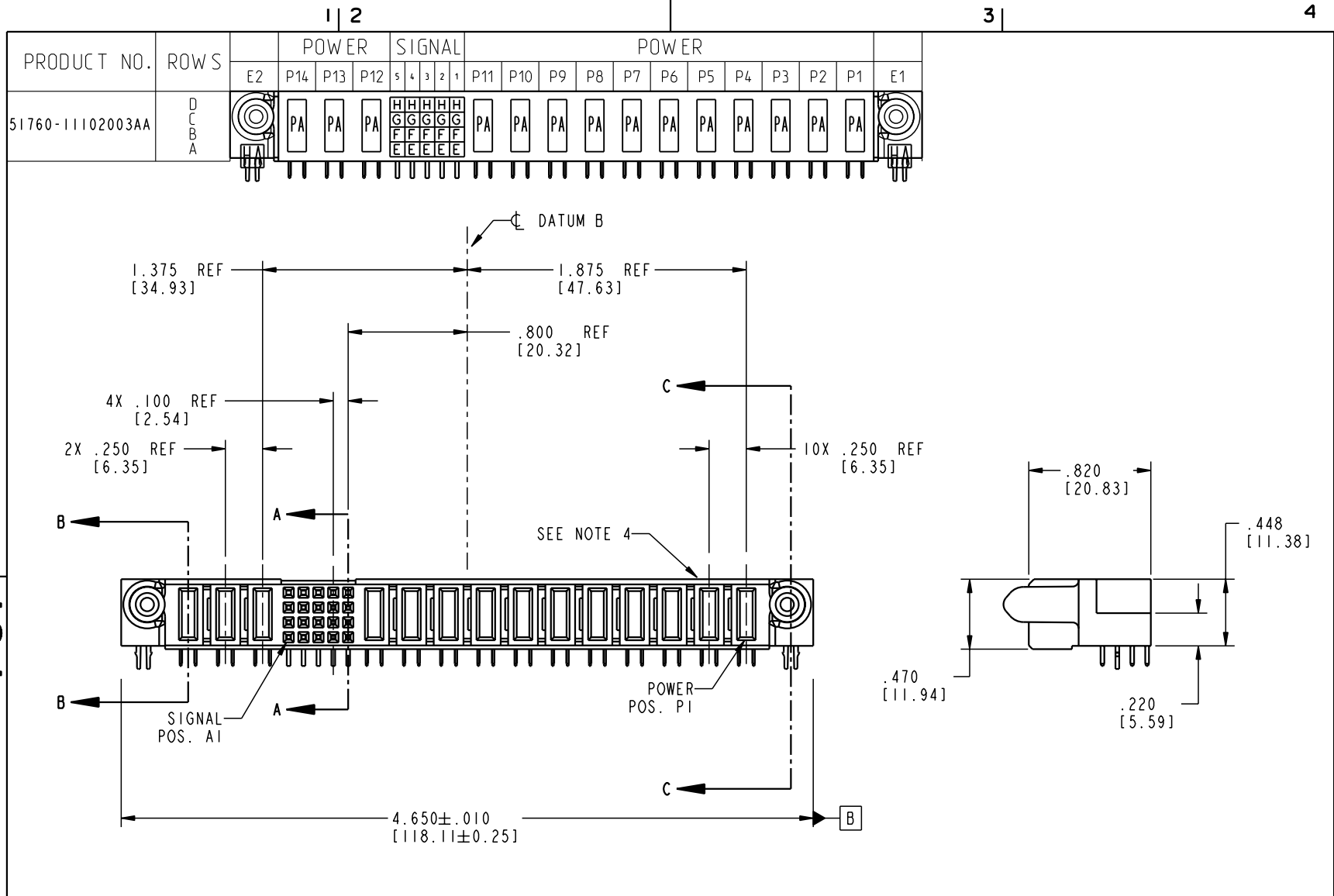


Tous droits strictement réservés. Reproduction ou communication o des liers interdite sous quelque forme que ce soit sans autorisation écrite du propriétaire. Propriete de c FCI. Droits de reproduction FCI.

All rights strictly reserved. Reproduction or issue to third parties in any form whenever is not permitted without written authority from the proprietor. Property of FCI. Copyright FCI.



| CODE | DIM "M" MATING LENGTH | CONTACT TYPE |
|------|-----------------------|--------------|
| E | N/A [N/A] | SIGNAL |
| F | N/A [N/A] | SIGNAL |
| G | N/A [N/A] | SIGNAL |
| H | N/A [N/A] | SIGNAL |
| PA | .042 [1.07] | POWER |
| HA | N/A [N/A] | HOLD-DOWN |

| | | | | | | | | | |
|-----------------------|---------|----------------|----------|---------------------------------------|----------------------------|----------|----------------|------------------------|-------------|
| mat'l code SEE NOTE 2 | | | | tolerances unless otherwise specified | | CUSTOMER | | www.fciconnect.com | |
| ltr | ecn no. | dr | date | linear | .XX ± .01/0.X ± 0.3 | | COPY | | INCH/MM |
| A | V21034 | DA1 | 06/11/02 | | .XXX ± .005/0.XX ± 0.13 | | projection | | |
| | | | | | .XXX ± .0020/0.XXX ± 0.051 | | | | |
| | | | | angles | 0° ± 2° | | | | |
| | | | | dr | D. INGRAM | 06/11/02 | product family | | code |
| | | | | engr | M. MOSTOLLER | 06/11/02 | PwrBlade | | 213 |
| | | | | chr | M. MOSTOLLER | 06/11/02 | size | | sheet |
| | | | | appd | M. MOSTOLLER | 06/11/02 | A | | 1 of 4 |
| sheet index | | revision sheet | A | A | A | A | scale | | |
| | | | 1 | 2 | 3 | 4 | 1:1 | | |
| | | | | Pro/E | | 3 | | cage code | |
| | | | | | | | | 22526 | |
| | | | | | | | | 4 | |

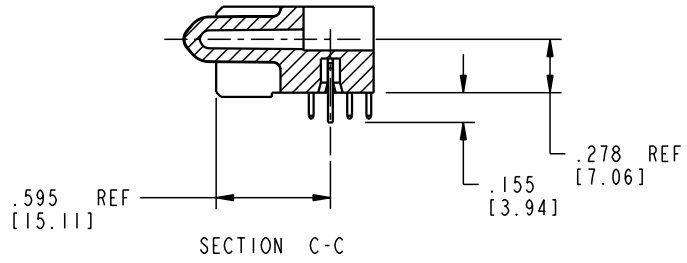
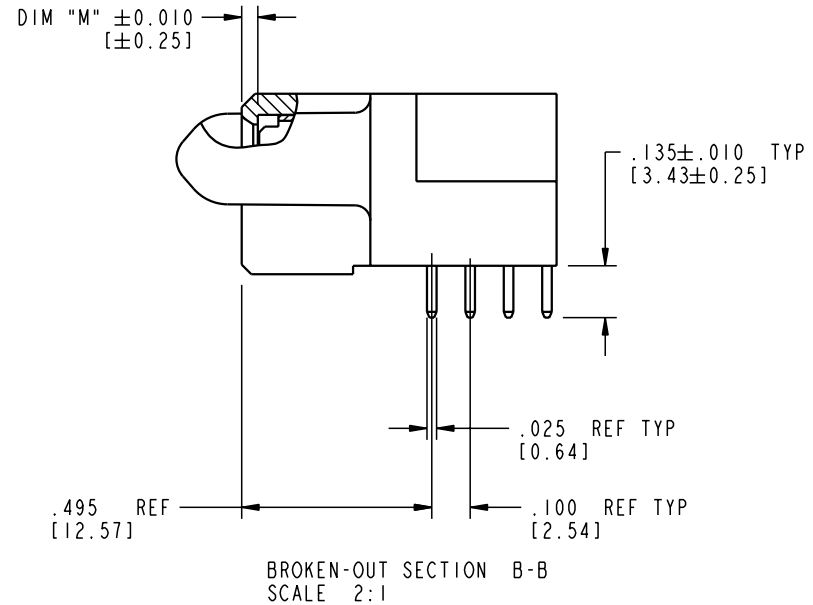
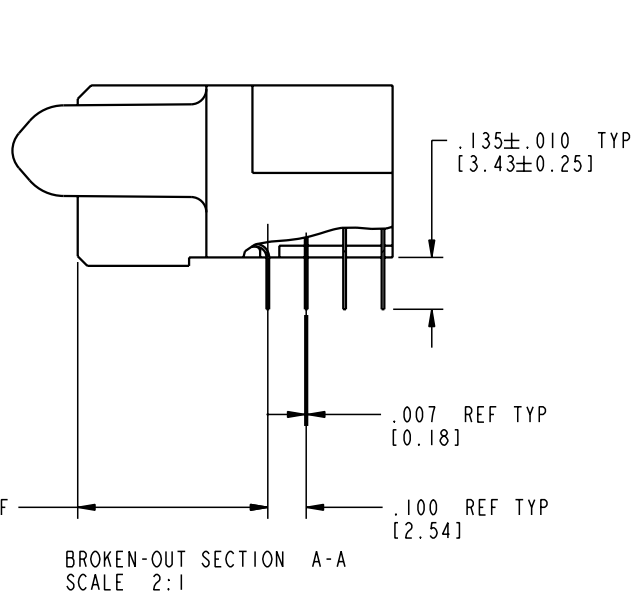
Tous droits strictement réservés. Reproduction ou communication o des tiers interdite sous quelque forme que ce soit sans autorisation écrite du propriétaire. Propriété de c FCI. Droits de reproduction FCI.


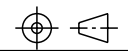
A **FCI**

All rights strictly reserved. Reproduction or issue to third parties in any form whatever is not permitted without written authority from the proprietor. Property of FCI. Copyright FCI.

B

PRODUCT NUMBER
51760-11102003AA



| | | | | | | | | | | | |
|-------------|----------------|----|------|------------|---------------------|---------------------------------------|---------|----------|---|---|----------|
| mat'l code | | | | SEE NOTE 2 | | tolerances unless otherwise specified | | CUSTOMER | |  FCI www.fciconnect.com | |
| ltr | ecn no. | dr | date | linear | .XX±.01/0.X±0.3 | | COPY | |  | | |
| A | | | | | .XXX±.005/0.XX±0.13 | | INCH/MM | | | | |
| | | | | | angles | .XXX±.0020/0.XXX±0.051 | | scale | | product family | PwrBlade |
| | | | | dr | D. INGRAM | 06/11/02 | 1:1 | | size | dwg no | 213 |
| | | | | enr | M. MOSTOLLER | 06/11/02 | | | A | 51760-11102003AA | sheet |
| | | | | chr | M. MOSTOLLER | 06/11/02 | | | | 2 of 4 | |
| | | | | appd | M. MOSTOLLER | 06/11/02 | | | | | |
| sheet index | revision sheet | | | | | | | | | | |

Pro/E

cage code 22526

Tous droits strictement réservés. Reproduction ou communication o des tiers interdite sous quelque forme que ce soit sans autorisation écrite du propriétaire. Propriété de c F.C.I. Droits de reproduction F.C.I.

A **FCI**

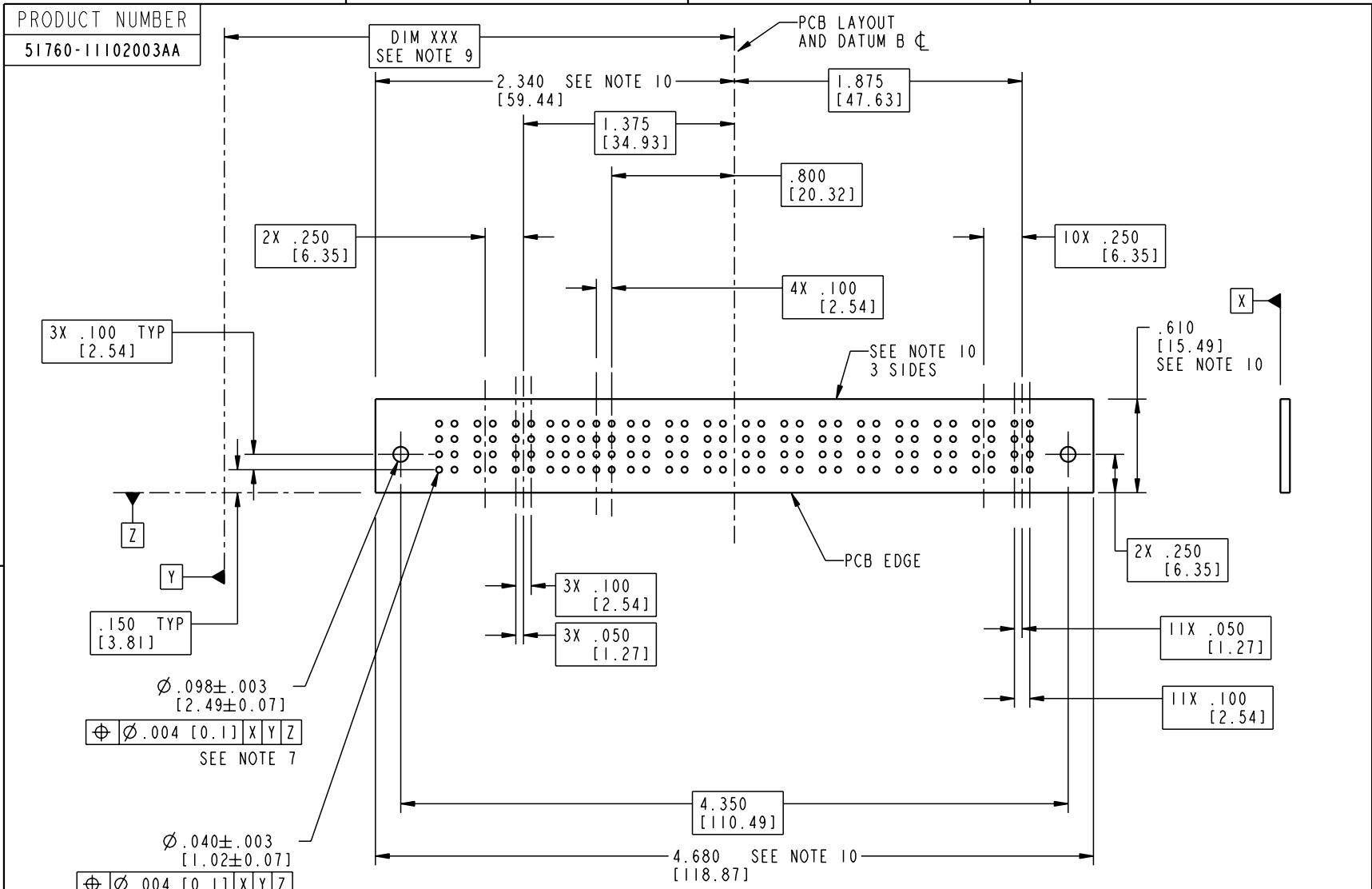
All rights strictly reserved. Reproduction or issue to third parties in any form, whenever is not permitted without written authority from the proprietor. Property of F.C.I. Copyright F.C.I.

A

A

B

B



PRODUCT NUMBER
51760-11102003AA

DIM XXX
SEE NOTE 9

PCB LAYOUT
AND DATUM B \perp

3X .100 TYP
[2.54]

2X .250
[6.35]

1.375
[34.93]

1.875
[47.63]

.800
[20.32]

4X .100
[2.54]

10X .250
[6.35]

.610
[15.49]
SEE NOTE 10

.150 TYP
[3.81]

$\varnothing .098 \pm .003$
[2.49 ± 0.07]

$\varnothing .004$ [0.1] X|Y|Z
SEE NOTE 7

$\varnothing .040 \pm .003$
[1.02 ± 0.07]

$\varnothing .004$ [0.1] X|Y|Z
SEE NOTE 8

3X .100
[2.54]

3X .050
[1.27]

2X .250
[6.35]

11X .050
[1.27]

11X .100
[2.54]

4.350
[110.49]

4.680 SEE NOTE 10
[118.87]

| | | | | | | | | | | | |
|-------------|----------------|----|------|------------|---------------------------|---------------------------------------|----------|----------|-------------------------------|---|--------|
| mat'l code | | | | SEE NOTE 2 | | tolerances unless otherwise specified | | CUSTOMER | | A FCI www.fciconnect.com | |
| ltr | ecr no. | dr | date | linear | .XX ± .01/0.X ± 0.3 | projection | COPY | | title | | |
| A | | | | angles | .XXX ± .005/0.XX ± 0.13 | \varnothing | INCH/MM | | IIP + 20 S + 3P | | |
| | | | | dr | .XXX ± .0020/0.XX ± 0.051 | $0^\circ \pm \gamma^\circ$ | scale | | product family | | code |
| | | | | enr | D. INGRAM 06/11/02 | 1:1 | PwrBlade | | RIGHT ANGLE SOLDER RECEPTACLE | | |
| | | | | chr | M. MOSTOLLER 06/11/02 | | size | | dwg no | | 213 |
| | | | | appd | M. MOSTOLLER 06/11/02 | | A | | 51760-11102003AA | | sheet |
| sheet index | revision sheet | | | | | | | | | | 3 of 4 |

cage code 22526

Pro/E

Tous droits strictement réservés. Reproduction ou communication o des tiers interdite sous quelque forme que ce soit sans autorisation écrite du propriétaire. Propriete de c FCI. Droits de reproduction FCI.

All rights strictly reserved. Reproduction or issue to third parties in any form, whatever is not permitted without written authority from the proprietor. Property of FCI. Copyright FCI.



PRODUCT NUMBER
51760-11102003AA

NOTES:

1. DIMENSIONS AND TOLERANCES ARE IN ACCORDANCE WITH ASME Y14.5M, 1994 UNLESS OTHERWISE SPECIFIED.

CONNECTOR NOTES:

- 2. HOUSING MATERIAL: UL 94 V-0 GLASS FILLED
HIGH-TEMP THERMOPLASTIC
POWER CONTACT MATERIAL: COPPER ALLOY
SIGNAL PIN MATERIAL: COPPER ALLOY
- 3. PLATING:
SIGNAL PINS: 30u"/0.76um Au OVER 50u"/1.27um Ni
POWER CONTACTS: 50u"/1.27um Ni UNDER ALL
WITH 30u"/0.76um Au ON CONTACT AREA
AND SnPb ON PCB INTERFACE
- 4. MANUFACTURER'S NAME, P/N, AND DATE CODE TO APPEAR ON THIS SURFACE.
- 5. PRODUCT SPECIFICATION GS-12-149.
APPLICATION SPECIFICATION BUS-20-067.

PCB NOTES:

- 6. ALL HOLE DIAMETERS ARE FINISHED HOLE SIZE.
- 7. MOUNTING HOLES, WHERE APPLICABLE, ARE UNPLATED.
- 8. $\varnothing .0453 \pm 0.0010$ [1.151 \pm 0.025] DRILLED HOLES PLATED WITH .0003 [0.008] MIN SnPb OVER .001 [0.03] TO .003 [0.08] Cu PLATING TO ACHIEVE $\varnothing .040 \pm .003$ [1.02 \pm .07] HOLE.
- 9. "DIM XXX" TO BE DETERMINED BY THE CUSTOMER.
- 10. CONNECTOR KEEP-OUT ZONE.

| | | | | | | | | | |
|-------------|----------------|------------|------|---------------------------------------|------------------------|------------|--|---|--|
| mat'l code | | SEE NOTE 2 | | tolerances unless otherwise specified | | CUSTOMER | | www.fciconnect.com | |
| ltr | ecr no. | dr | date | linear | .XX±.01/0.X±0.3 | COPY | | | |
| A | | | | linear | .XXX±.005/0.XX±0.13 | projection | | | |
| | | | | angles | .XXX±.0020/0.XXX±0.051 | INCH/MM | | | |
| | | | | dr | D. INGRAM 06/11/02 | scale | | product family PwrBlade code 213 size dwg no 51760-11102003AA sheet 4 of 4 | |
| | | | | enr | M.MOSTOLLER 06/11/02 | 1:1 | | | |
| | | | | chr | M.MOSTOLLER 06/11/02 | | | | |
| | | | | appd | M.MOSTOLLER 06/11/02 | | | | |
| sheet index | revision sheet | | | | | | | | |

cage code 22526

Pro/E

PDM: Rev:A

STATUS: Released

Printed: Aug 14, 2007